

**within Staff**

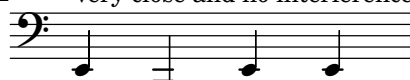
default padding



ped.

\*

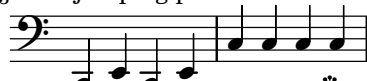
2 very close and no interference



ped.

\*

3 jumping pedal marks



ped.

\*

ped.

\*

5 again jumping



ped.

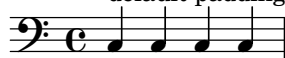
\*

ped.

\*

**Dynamics line**

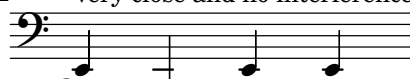
default padding



ped.

\*

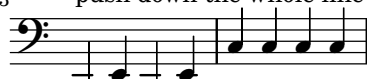
2 very close and no interference



ped.

\*

3 push down the whole line



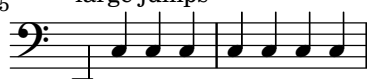
ped.

\*

ped.

\*

5 large jumps



ped.

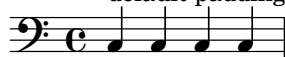
\*

ped.

\*

**Dynamics line with manual correction**

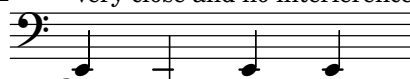
default padding



ped.

\*

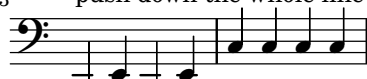
2 very close and no interference



ped.

\*

3 push down the whole line



ped.

\*

ped.

\*

5 large jumps



ped.

\*

ped.

\*