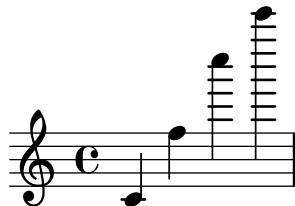


“floating notes” set as is: c' f' c'' c'



“floating notes” interpreted as \relative to first note



“floating notes” re-octavated by \relative c,



“floating notes” interpreted as \absolute by \transpose c c



“floating notes” interpreted as \absolute by \transpose c f



“floating notes” interpreted twice by one \relative, which is blind to the transposed section in the middle

